

Моноблочные химические насосы серии CMS Технические характеристики

По вопросам продаж и поддержки обращайтесь:

Алматы (7273)495-231
Ангарск (3955)60-70-56
Архангельск (8182)63-90-72
Астрахань (8512)99-46-04
Барнаул (3852)73-04-60
Белгород (4722)40-23-64
Благовещенск (4162)22-76-07
Брянск (4832)59-03-52
Владивосток (423)249-28-31
Владикавказ (8672)28-90-48
Владимир (4922)49-43-18
Волгоград (844)278-03-48
Вологда (8172)26-41-59
Воронеж (473)204-51-73
Екатеринбург (343)384-55-89
Иваново (4932)77-34-06
Ижевск (3412)26-03-58
Иркутск (395)279-98-46
Казань (843)206-01-48
Россия +7(495)268-04-70

Калининград (4012)72-03-81
Калуга (4842)92-23-67
Кемерово (3842)65-04-62
Киров (8332)68-02-04
Коломна (4966)23-41-49
Кострома (4942)77-07-48
Краснодар (861)203-40-90
Красноярск (391)204-63-61
Курск (4712)77-13-04
Курган (3522)50-90-47
Липецк (4742)52-20-81
Магнитогорск (3519)55-03-13
Москва (495)268-04-70
Мурманск (8152)59-64-93
Набережные Челны (8552)20-53-41
Нижний Новгород (831)429-08-12
Новокузнецк (3843)20-46-81
Ноябрьск (3496)41-32-12
Новосибирск (383)227-86-73
Киргизия +996(312)-96-26-47

Омск (3812)21-46-40
Орел (4862)44-53-42
Оренбург (3532)37-68-04
Пенза (8412)22-31-16
Петрозаводск (8142)55-98-37
Псков (8112)59-10-37
Пермь (342)205-81-47
Ростов-на-Дону (863)308-18-15
Рязань (4912)46-61-64
Самара (846)206-03-16
Саранск (8342)22-96-24
Санкт-Петербург (812)309-46-40
Саратов (845)249-38-78
Севастополь (8692)22-31-93
Симферополь (3652)67-13-56
Смоленск (4812)29-41-54
Сочи (862)225-72-31
Ставрополь (8652)20-65-13
Сургут (3462)77-98-35
Казахстан +7(7172)727-132

Сыктывкар (8212)25-95-17
Тамбов (4752)50-40-97
Тверь (4822)63-31-35
Тольятти (8482)63-91-07
Томск (3822)98-41-53
Тула (4872)33-79-87
Тюмень (3452)66-21-18
Ульяновск (8422)24-23-59
Улан-Удэ (3012)59-97-51
Уфа (347)229-48-12
Хабаровск (4212)92-98-04
Чебоксары (8352)28-53-07
Челябинск (351)202-03-61
Череповец (8202)49-02-64
Чита (3022)38-34-83
Якутск (4112)23-90-97
Ярославль (4852)69-52-93

IT

CMS-F 5020A 4A75 C181 3

EN

1 Modello pompa

CMS-F Pompa monoblocco con flange EN 1092-1
CMS-G Pompa monoblocco con attacchi DIN 11851

2 Grandezza pompa

3 Riduzione girante

"A" diametro massimo
"B" 1° riduzione
"C" 2° riduzione
"AR" = riduzione intermedia (tra A e B)

4 Polarità motore

2 = motore elettrico a 2 poli
4 = motore elettrico a 4 poli
6 = motore elettrico a 6 poli
8 = motore elettrico a 8 poli

5 Potenza motore elettrico

A - 0.25 → 0.75 kW

B - 1.1 → 9.2 kW

C - 11 → 90 kW

D - 110 → 400 kW

KW	0.25	0.37	0.55	0.75
Cod.	A25	A37	A55	A75

KW	1.1	1.5	2.2	3.0	4.0	5.5	7.5	9.2
Cod.	B11	B15	B22	B30	B40	B55	B75	B92

KW	11	15	18.5	22	30	37	45	55	75	90
Cod.	C11	C15	C18	C22	C30	C37	C45	C55	C75	C90

KW	110	132	160	200	225	250	280	315	355	400
Cod.	D11	D13	D16	D20	D22	D25	D28	D31	D35	D40

6 Sistema di tenuta

Esecuzione **M** : Tenuta meccanica singola
Esecuzione **B** : Tenuta a baderna senza flussaggio
Esecuzione **S** : Tenuta a baderna con flussaggio (solo in ingresso)
Esecuzione **H** : Camera di riscaldamento o raffreddamento
Esecuzione **C** : Tenuta meccanica doppia contrapposta
Esecuzione **L** : Tenuta meccanica doppia in tandem
Esecuzione **A** : Tenuta meccanica singola con bussola di fondo
Vedere tabella dispositivi di raffreddamento (o riscaldamento) e di tenuta

7 Codice tenuta meccanica primaria

Nota
Per esecuzioni "B" e "S"=000

8 Codice componenti principali della pompa

1 Pump type

CMS-F Closed coupled pump with flange EN 1092-1
CMS-G Closed coupled pump with DIN

2 Pump size

3 Impeller trim

"A" maximum diameter
"B" 1° trim
"C" 2° trim
"AR" = intermediate trim (between A and B)

4 Motor polarity

2 = 2 poles electric motor
4 = 4 poles electric motor
6 = 6 poles electric motor
8 = 8 poles electric motor

5 Electric motor power

6 Sealing system

M Execution : Single mechanical seal
B Execution : Gland packing without flushing
S Execution : Gland packing with flushing (inlet only)
H Execution : Heating or cooling chamber
C Execution : Double back to back mechanical seal
L Execution : Double tandem mechanical seal
A Execution : Single mechanical seal with throttle bushing
See cooling (or heating) devices table or seal table

7 Primary mechanical seal Code

Nota
For "B" and "S" executions=000

8 Identification code for pump's parts

DESCRIZIONE	DESCRIPTION	CODICE MATERIALE POMPA - PUMPS MATERIAL CODE
		3
CORPO	CASING	CF8M (AISI 316)
COPERCHIO CORPO	CASING COVER	CF8M (AISI 316)
GIRANTE	IMPELLER	CF8M (AISI 316)
ALBERO	SHAFT	AISI 316L
PIEDE SOSTEGNO	SUPPORT FOOT	FE 37
LANTERNA	LANTERN BRACKET	G200/G250/FE37
COPERCHIO TENUTA SINGOLA	SINGLE MECHANICAL SEAL COVER	AISI 316L
COPERCHIO TENUTA DOPPIA	DOUBLE MECHANICAL SEAL COVER	A316L
OGIVA GIRANTE	IMPELLER HUB	A316L

Descrizione - Description	Unità di misura - Unit of measurement	Grandezze - Size												
		20-08	25-12	32-12	40-12	32-16	40-16	50-16	65-16	32-20	40-20	50-20	65-20	
Grandezza lanterna - Lantern bracket size		1	2			3				4				
Corpo - Casing														
Spessore corpo - Casing thickness	mm	4	4	3	3	3	3	3	3	5	5	5	5	
Pressione di progetto - Design pressure	bar	4	6						8		6			
Foro drenaggio - Casing drain		A richiesta - on request												
Girante - Impeller														
Numero di pale - Blade number	mm	6	6	6	6	9	9	9	9	6	6	9	9	
Passaggio sferico RS/RSA - Max.sphere RS/RSA	mm	12	15	22	30	22	30	40	50	5	6	40	50	
Dia ingresso - Inlet diameter	mm	25	32	50	65	50	65	80	100	50	65	65	80	
Dia massimo - Max.diameter	mm	85	130	130	130	170	170	170	170	209	209	209	209	
Dia minimo - Min.diameter	mm	65	85	85	85	135	135	135	135	160	160	170	170	
Momento di inerzia J ^(a) - Moment of inertia J ^(a)	kgm ²	0,01	0,01	0,01	0,01	0,01	0,01	0,01	0,01	0,02	0,02	0,02	0,02	
Cassa stoppa - Seal chamber														
Diametro - Diameter	mm	40						49						
Profondità - Depth	mm	45						51						
Sezione baderna - Section packing	mm	8						8						
N.° anelli baderna con anello idraulico Packing ring with lantern ring		4						5						
N.° anelli baderna senza anello idraulico Packing ring without lantern ring		5						6						
Dia. tenuta meccanica - mechanical seal diameter	mm	24						33						
Ingresso anello idraulico - Lantern ring holes		G.1/4						G.1/4						
Ingresso Ten. Mecc. - Connections mech. seal		G.1/4						G.1/4						
Camera di raffreddamento - Cooling jacket														
Pressione max - Max.pressure	bar	-	3											
Pressione di prova - Max.hydrostatic pressure	bar	-	4,5											
Connessioni - Connections holes		G.1/4												
Albero - Shaft														
Diametro albero - Shaft diameter	mm	24						33						
Diam. sotto la girante - Shaft dia. Under impeller	mm	Conico 5°						20						
Potenza max. - Max. Power														
Valore max. P/n - Max.value P/n		0,0052			0,0064				0,0076					
Potenza max. - Max.power to 960 1/min.	kW	5			6				7,3					
Potenza max. - Max.power to 1450 1/min.	kW	7,5			9,2				11					
Potenza max. - Max.power to 2900 1/min.	kW	15			15		-		15		-			
Forma mot. elettrico - El. motor shape														
Kw 0,55 / 2 poli - size 71		B314			-									
Kw 0,75 - 1,1 - 1,5 - 2,2 / 2 poli - size 80 / 90		-	B5			-								
Kw 3 - 4 / 2 poli - size 100 / 112		-	B3B5											
Kw 5,5 - 7,5 - 9,2 - 11 / 2 poli - size 132		-	B3B5											
Kw 0,37 / 4 poli - size 71		B314			-									
Kw 0,55 - 0,75 - 1,1 - 1,5 / 4 poli - size 80 / 90		-	B5			B3B5								
Kw 2,2 - 3 - 4 / 4 poli - size 100 / 112		-	B3B5											
Kw 5,5 - 7,5 - 9,2 / 4 poli - size 132		-	B3B5											

I dati indicati non sono impegnativi e possono cambiare con le condizioni di lavoro
Technical data are indicative and they can change according to pump work

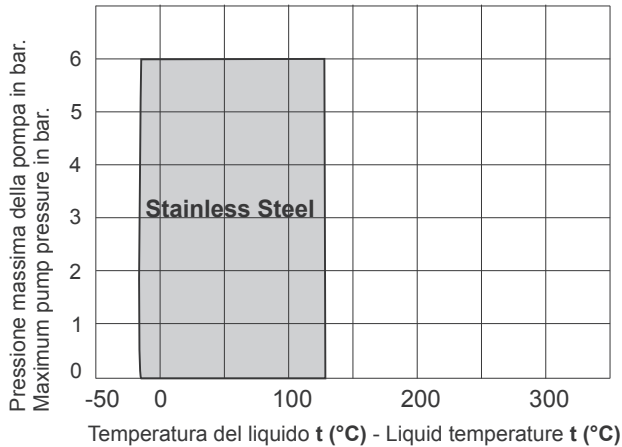
^(a) Dividi per 1000 per ottenere il momento di inerzia J in kgm²
Divide by 1000 to obtain the moment of inertia J in kgm²

Limiti di pressione e di temperatura

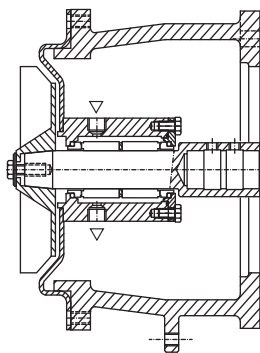
(Senza prescrizioni speciali)

Impiego per tutti i liquidi, ad eccezione di acqua calda e liquidi diatermici organici.

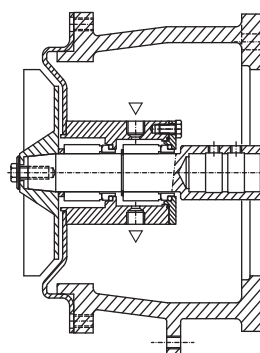
Materiali di costruzione :
Construction materials :



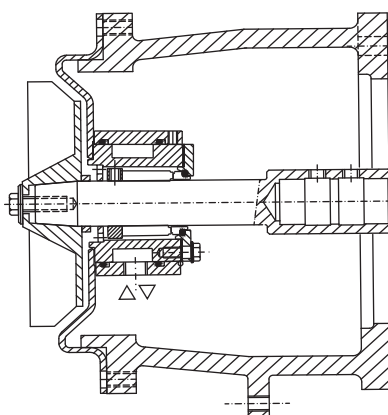
Materiali a richiesta : Sanicro, SAF
Materials on request : Sanicro, SAF



Esecuzione C
C Execution



Esecuzione L
L Execution



Esecuzione H
H Execution

Pressure and temperature limits

(Without special advice)

For all liquids, except hot water and organic diathermic liquid.

LIMITI DI IMPIEGO DUTY LIMITS

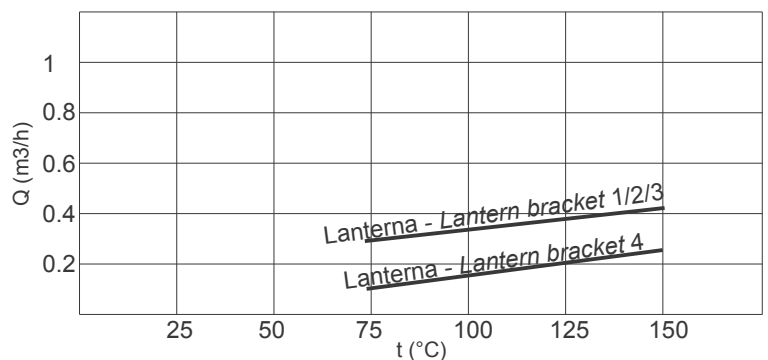
Material	Temperature	Pressione
Acciaio	-20 +120	6 Bar ^(*)
Material	Temperature	Pressure
Stainless Steel	-20 +120	6 Bar ^(*)

^(*) 8 Bar per le grandezze 32-20; 40-20; 50-20; 65-20
8 Bar for size 32-20; 40-20; 50-20; 65-20

Flussaggio tenuta meccanica contrapposta **esecuzione C-L**
Back to back mechanical seal flushing **C-L execution.**

Lanterna Lantern bracket	Dia. ten. mecc. Mech. seal dia. [mm]	Portata flusso Flushing capacity [l/min].		P di flusso Flushing pressure [bar]	
		2900 rpm	1450 rpm	C	L
1	24	0,8	0,4	0.5 > p mandata 0.5 > discharge p	< 0.3
2-3	33	1,4	0,7		

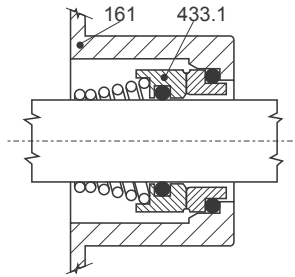
Flussaggio camera di raffreddamento **esecuzione H**
Cooling chamber flushing **H execution.**



Esecuzione Standard

Execution Standard

API Plan 02

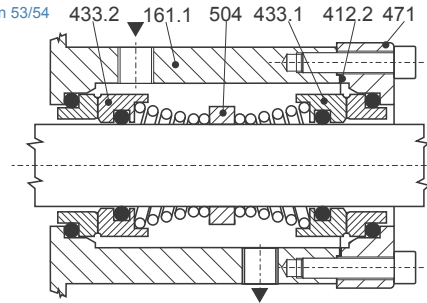


Tenuta meccanica - Single mechanical seal

Esecuzione "C"

Execution "C"

API Plan 53/54

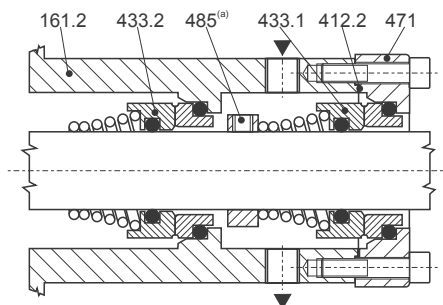


Tenuta meccanica doppia - Double mechanical seal

Esecuzione "L"

Execution "L"

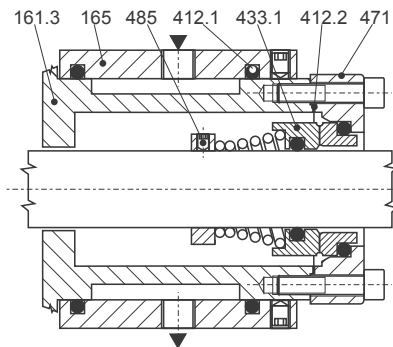
API Plan 52



Tenuta mecc doppia in tandem - Tandem mech. seal

Esecuzione "A" e "H"

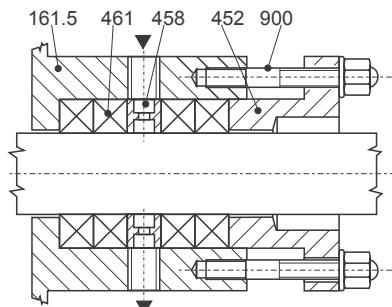
Execution "A" and "H"



Riscaldamento o raffreddamento - Cooling or Heating

Esecuzione "F"

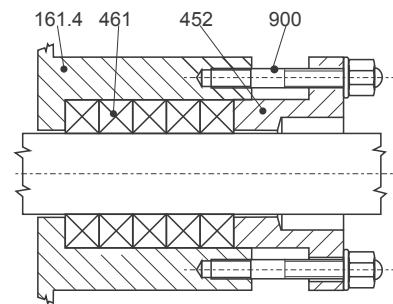
Execution "F"



Baderna con flussaggio - Gland packing with flushing

Esecuzione "B"

Execution "B"



Tenuta a baderna - Gland packing

N.	DESCRIZIONE	DESCRIPTION
161	Coperchio del corpo a tenuta meccanica	Casing cover - mechanical seal
161.1	Coperchio del corpo a esecuzione "C"	Casing cover "C" execution
161.2	Coperchio del corpo a esecuzione "L"	Casing cover "L" execution
161.3	Coperchio del corpo a esecuzione "A" e "H"	Casing cover "A" and "H" executions
161.4	Coperchio del corpo a esecuzione "B"	Casing cover "B" execution
161.5	Coperchio del corpo a esecuzione "F"	Casing cover "F" execution
165	Camicia di riscaldamento / raffreddamento	Cooling / Heating jacket
412.1	O.Ring	O.Ring
412.2	O.Ring	O.Ring
433.1	Tenuta meccanica	Mechanical seal
433.2	Tenuta meccanica	Mechanical seal
452	Premitreccia	Packing gland
458	Anello idraulico	Lantern ring
461	Baderna	Packing ring
471	Coperchio tenuta meccanica	Mechanical seal cover
485(a)	Distanziale tenuta meccanica(a)	Mechanical seal spacer(a)
504	Distanziale	Spacer
900	Prigioniero con dado	Stud with nut

^(a) Su RS con lanterna grandezza 1 (vedi tabella T-1453 «Dati tecnici») viene utilizzato un seeger al posto del distanziale.

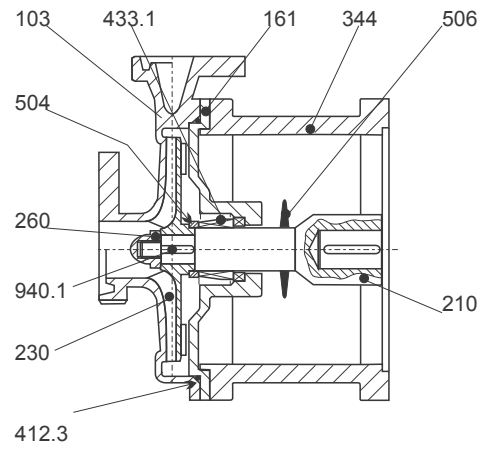
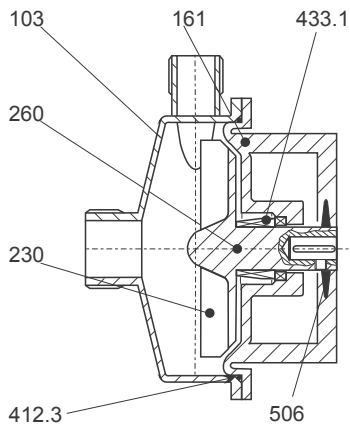
^(a) RS pumps, lantern bracket size 1 (see table T-1453 «Technical features»): instead of the spacer, it has been mounted the circlip.

Sezione con nomenclatura monoblocco

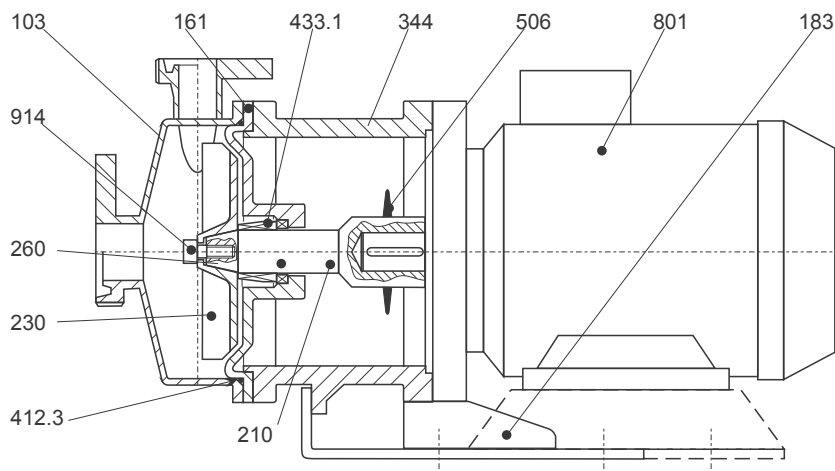
Close coupled sectional view and nomenclature

Grandezze - Size: **20-08**

Grandezze - Size: **32-20, 40-20**



Grandezze - Size: **25-12, 32-12, 32-16, 40-12, 40-16, 50-16, 50-20, 65-16, 65-20**



N.	DESCRIZIONE	DESCRIPTION
103	Corpo	Casing
161	Coperchio del corpo	Casing cover
210	Albero	Shaft
183	Piede di appoggio	Support foot
230	Girante	Impeller
260	Ogiva girante	Impeller Hub
344	Lanterna motore	Lantern bracket
412.3	O.Ring corpo	O.Ring casing
504.1	Distanziale girante	Impeller spacer
506	Paraspruzzi	Deflector
433.1	Tenuta meccanica	Mechanical seal
801	Motore elettrico	Electric motor
904	Grano	Locking screw
914	Vite ogivale	Screw
940.1	Linguetta girante	Impeller key

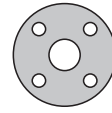


Fig. 1

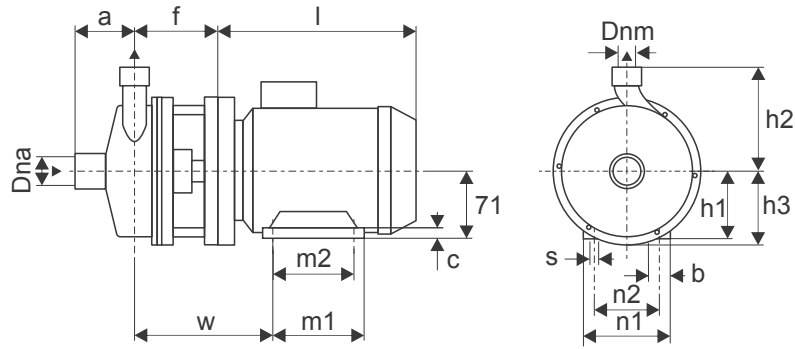


Fig. 2

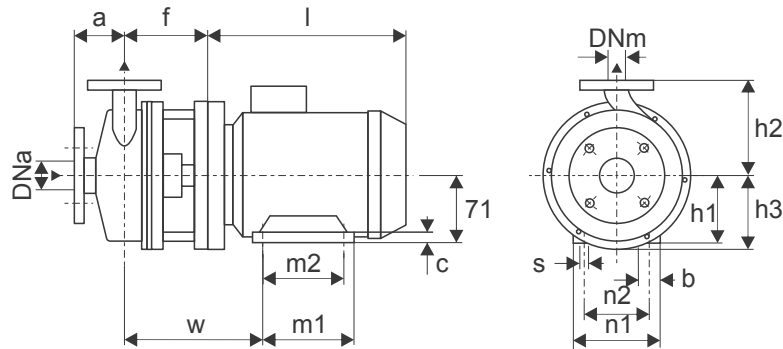


Fig. 3

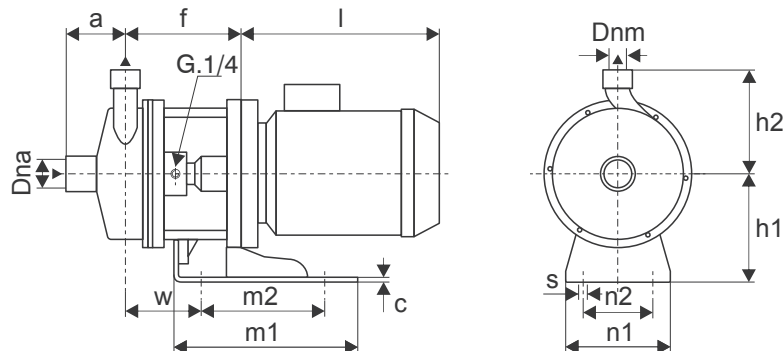


Fig. 4

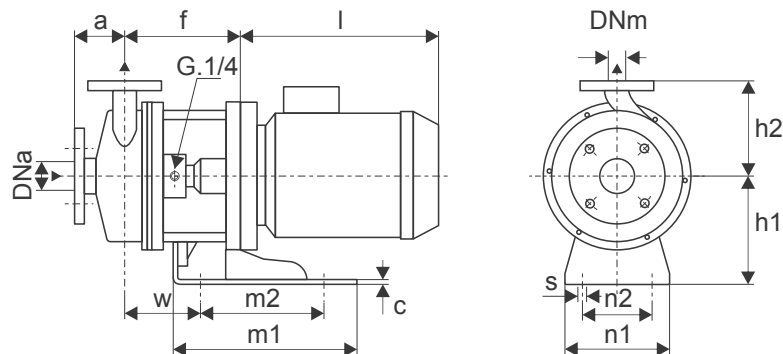
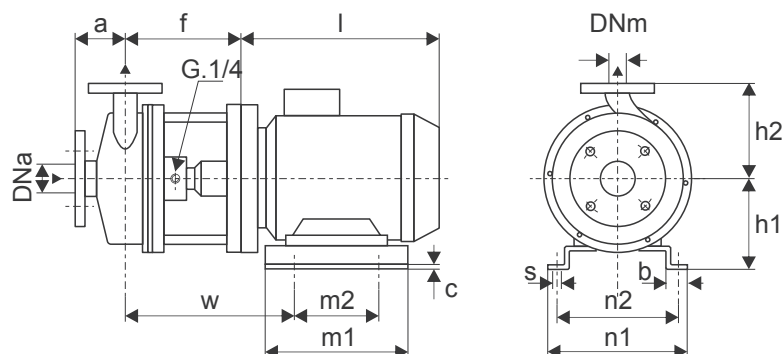
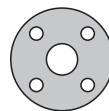


Fig. 5





MOTORE ELETTRICO ELECTRIC MOTOR					
Grandezza Size IEC	Potenza in Kw Power in Kw			I ^(a) [mm]	Peso ^(a) Weight [Kg]
	2 Poli 2 Poles	4 Poli 4 Poles	6 Poli 6 Poles		
71	0.37	0.25	0.18	205	5.5
71	0.55	0.37	0.25	205	5.5
80	0.75	0.55	0.37	235	9
80	1.1	0.75	0.55	235	10
90	1.5	1.1	0.75	250	12
90	2.2	1.5	1.1	280	14
100	3	2.2	1.5	300	21
100	-	3	-	300	23
112	4	4	2.2	330	30
132	5.5	5.5	3	400	40
132	7.5	7.5	4	400	45
132	9.2	9.2	5.5	400	52
132	11	-	-	400	60
160	15	-	-	490	85

DIMENSIONI FLANGE FLANGE DIMENSIONS				
DNa DNm	DE	CF	Lf	Zf
32	140	100	18	4
40	150	110	18	4
50	165	125	18	4
65	185	145	18	4
80	200	160	18	8
100	220	180	18	8

Figura picture	Pompa tipo Pump size	Grandezza motore Motor size	DIMENSIONI-DIMENSIONS [mm]														Peso weight ^(b) [kg]	
			DNa	DNm	a	f	h1	h2	h3	b	c	m1	m2	n1	n2	s		w
1	20-08	71	1"M	3/4"M	42	90	71	100	-	35	10	116	90	142	112	7	135	4,5
1		71	1"M	3/4"M	42	90	71	100	-	35	10	116	90	142	112	7	135	4,5
1	25-12	71	1"1/4F	1"F	75	84	71	160	102	35	10	116	90	142	112	7	129	5,5
3		80	1"1/4F	1"F	75	174	150	160	-	0	4	235	165	164	130	10	122	12
3		90	1"1/4F	1"F	75	174	150	160	-	0	4	235	165	164	130	10	122	12
5		100	1"1/4F	1"F	75	194	150	160	-	23	3	250	175	250	230	10	244	
2	32-12	71	50	32	80	95	71	140	102	35	10	116	90	142	112	7	140	7,5
4		80	50	32	80	176	150	140	-	0	4	235	165	164	130	10	124	14
4		90	50	32	80	176	150	140	-	0	4	235	165	164	130	10	124	14
5		100	50	32	80	196	150	140	-	23	3	250	175	250	230	10	244	16
5	32-16	80	50	32	80	184	155	160	-	23	3	300	220	203	183	10	174	20
5		90	50	32	80	184	165	160	-	23	3	300	220	218	198	10	193	20
5		100	50	32	80	204	155	160	-	25	3	280	200	240	218	12	237	22
5		112	50	32	80	204	167	160	-	25	3	280	200	270	248	12	244	22
5	32-20	132	50	32	80	224	162	160	-	29	4	340	220	326	304	14	269	27
5		80	50	32	80	191	155	177	-	23	3	300	220	203	183	10	175	30
5		90	50	32	80	191	165	177	-	23	3	300	220	218	198	10	194	30
5		100	50	32	80	211	155	177	-	25	3	280	200	240	218	12	238	33
5	40-12	112	50	32	80	211	167	177	-	25	3	280	200	270	248	12	245	33
5		132	50	32	80	231	162	177	-	29	4	340	220	326	304	14	270	38
2		70	65	40	80	95	71	140	102	35	10	116	90	142	112	7	140	8,5
4		80	65	40	80	176	150	140	-	0	4	235	165	164	130	10	124	15
4	40-16	90	65	40	80	176	150	140	-	0	4	235	165	164	130	10	124	15
5		100	65	40	80	196	130	140	-	23	3	250	175	250	230	10	244	17
5		112	65	40	80	196	142	140	-	23	3	250	175	280	260	10	238	17
5		80	65	40	80	190	155	160	-	23	3	300	220	203	183	10	180	21
5	40-20	90	65	40	80	190	165	160	-	23	3	300	220	218	198	10	199	21
5		100	65	40	80	210	155	160	-	25	3	280	200	240	218	12	243	23
5		112	65	40	80	210	167	160	-	25	3	280	200	270	248	12	250	23
5		132	65	40	80	230	162	160	-	29	4	340	220	326	304	14	275	28
5	50-16	90	65	40	100	191	165	180	-	23	3	300	220	218	198	10	196	31
5		100	65	40	100	213	155	180	-	25	3	280	200	240	218	12	240	34
5		112	65	40	100	213	167	180	-	25	3	280	200	270	248	12	247	34
5		132	65	40	100	235	162	180	-	29	4	340	220	326	304	14	272	39
5	50-20	80	80	50	100	195	155	180	-	23	3	300	220	203	183	10	185	24
5		90	80	50	100	195	165	180	-	23	3	300	220	218	198	10	204	24
5		100	80	50	100	215	155	180	-	25	3	280	200	240	218	12	248	26
5		112	80	50	100	215	167	180	-	25	3	280	200	270	248	12	255	26
5	65-16	132	80	50	100	225	162	180	-	29	4	340	220	326	304	14	280	31
5		100	65	50	100	239	155	200	-	25	3	280	200	240	218	12	266	41
5		112	65	50	100	239	167	200	-	25	3	280	200	270	248	12	273	41
5		132	65	50	100	259	162	200	-	25	4	340	220	326	304	14	298	46
5	65-20	160	65	50	100	289	190	200	-	25	4	340	220	364	342	14	392	53
5		90	100	65	100	195	165	200	-	23	3	300	220	218	198	10	204	25
5		100	100	65	100	215	155	200	-	25	3	280	220	240	218	12	248	27
5		112	100	65	100	215	167	200	-	25	3	280	200	270	248	12	255	27
5	65-20	100	80	65	100	248	155	225	-	25	3	280	200	240	218	12	275	39
5		112	80	65	100	248	167	225	-	25	3	280	200	270	246	12	282	39
5		132	80	65	100	268	162	225	-	29	4	340	220	326	304	14	307	44

Quote e pesi suscettibili di variazione.
Dimensions and weights are subject to variations.

^(a)Quota indicativa può variare in funzione della marca del motore
Not binding dimension that can change according to motor brand

^(b)Peso senza motore elettrico
Weight without electric motor

M**= maschio - male - F** = femmina - female

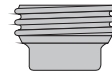


Fig. 1

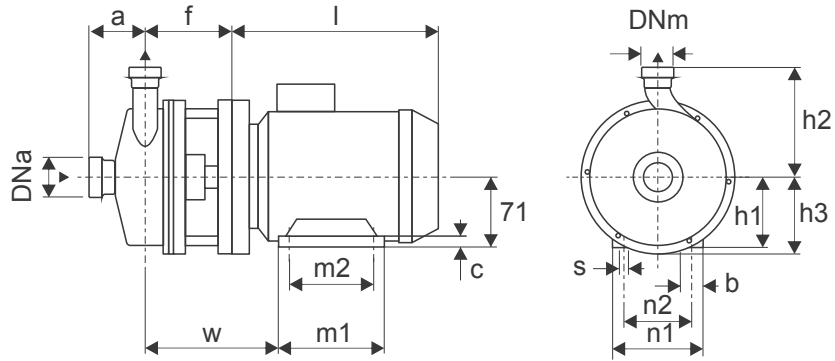


Fig. 2

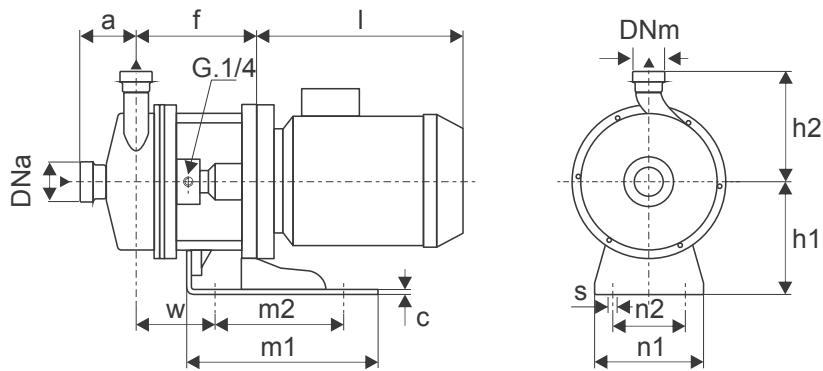
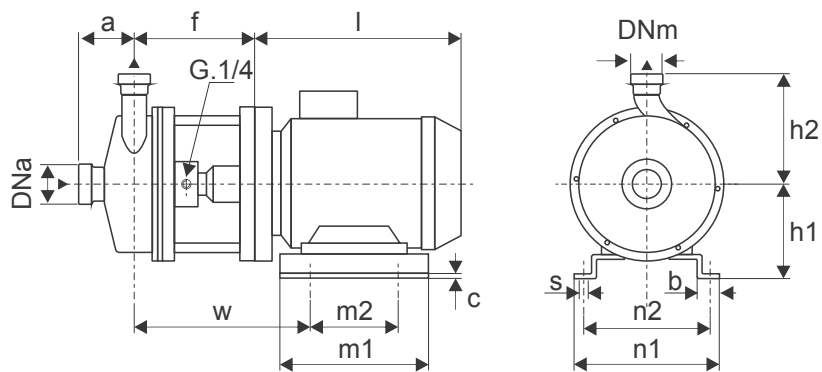
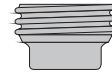


Fig. 3

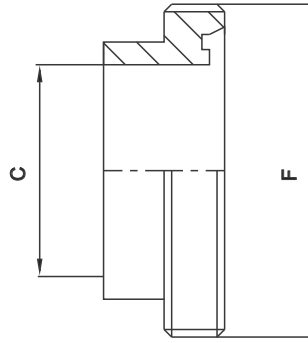




Ingombri monoblocco

Close coupled pump Overall dimensions

MOTORE ELETTRICO ELECTRIC MOTOR					
Grandezza Size IEC	Potenza in Kw Power in Kw			l ^(a) [mm]	Peso ^(a) Weight [Kg]
	2 Poli 2 Poles	4 Poli 4 Poles	6 Poli 6 Poles		
71	0.37	0.25	0.18	205	5.5
71	0.55	0.37	0.25	205	5.5
80	0.75	0.55	0.37	235	9
80	1.1	0.75	0.55	235	10
90	1.5	1.1	0.75	250	12
90	2.2	1.5	1.1	280	14
100	3	2.2	1.5	300	21
100	-	3	-	300	23
112	4	4	2.2	330	30
132	5.5	5.5	3	400	40
132	7.5	7.5	4	400	45
132	9.2	9.2	5.5	400	52
132	11	-	-	400	60
160	15	-	-	490	85



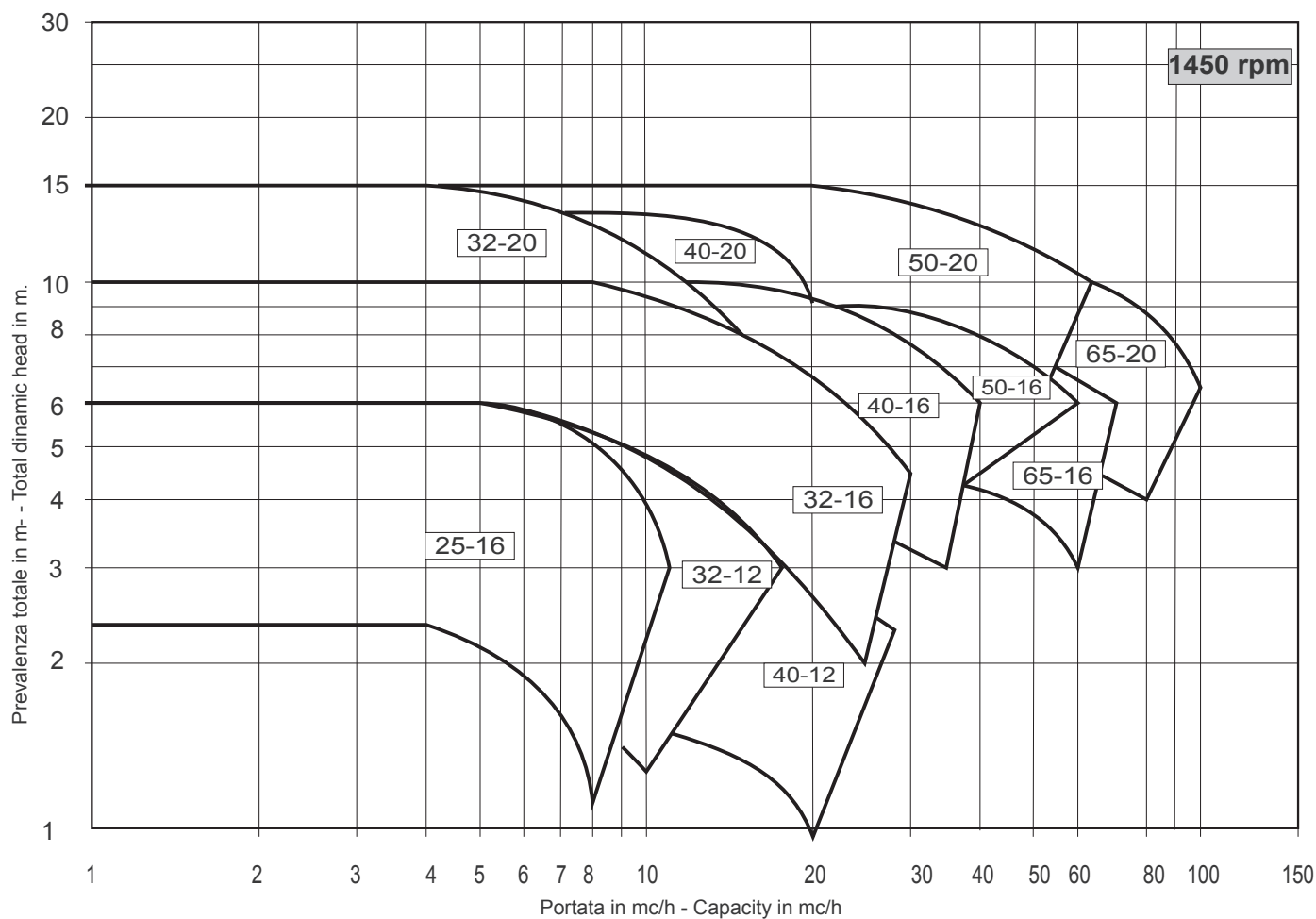
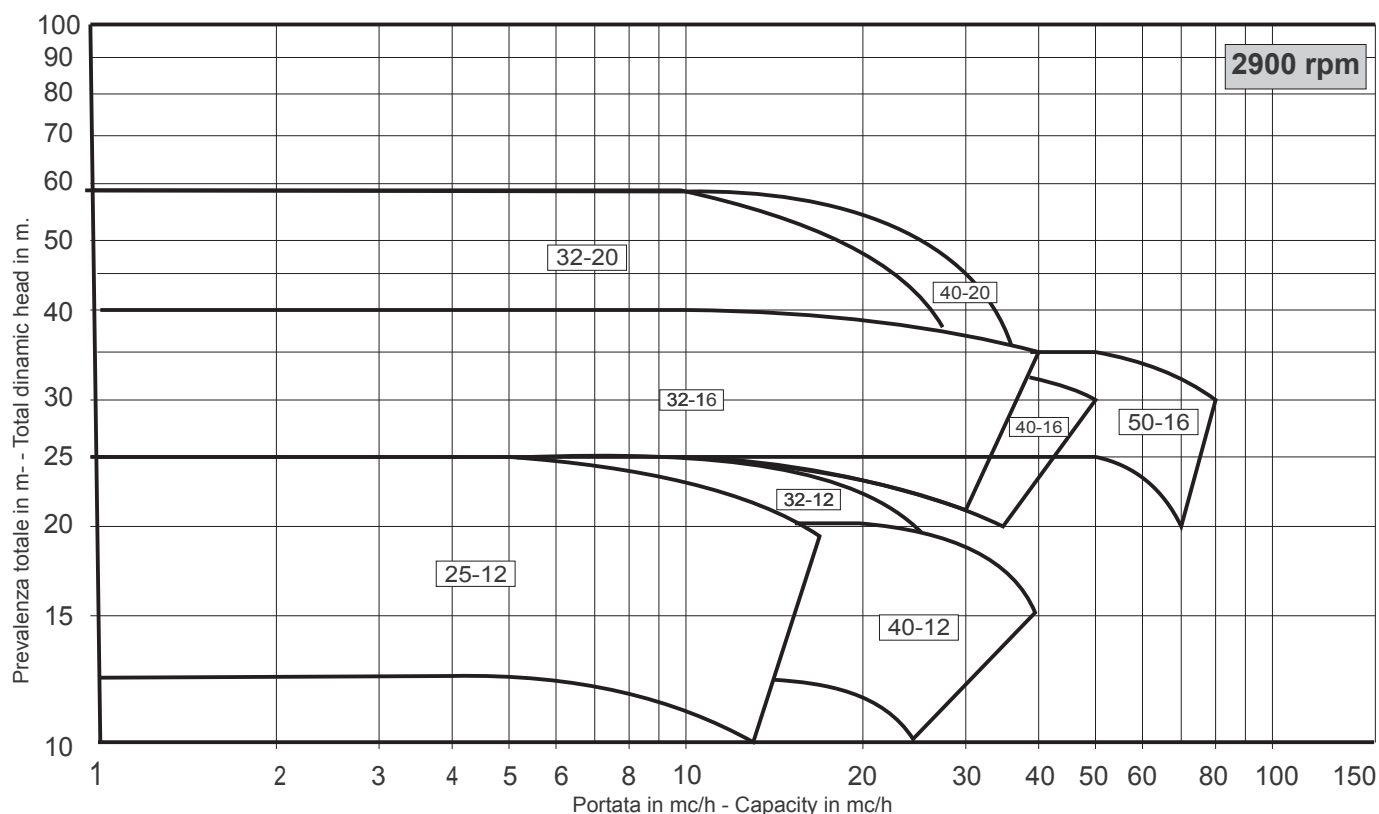
DIN 11851		
DNa DNm	C	F
25	25,0	52x1/6
32	31,0	58x1/6
40	37,0	65x1/6
50	49,0	78x1/6
65	66,0	95x1/6
80	81,0	110x1/4
100	97,6	130x1/4

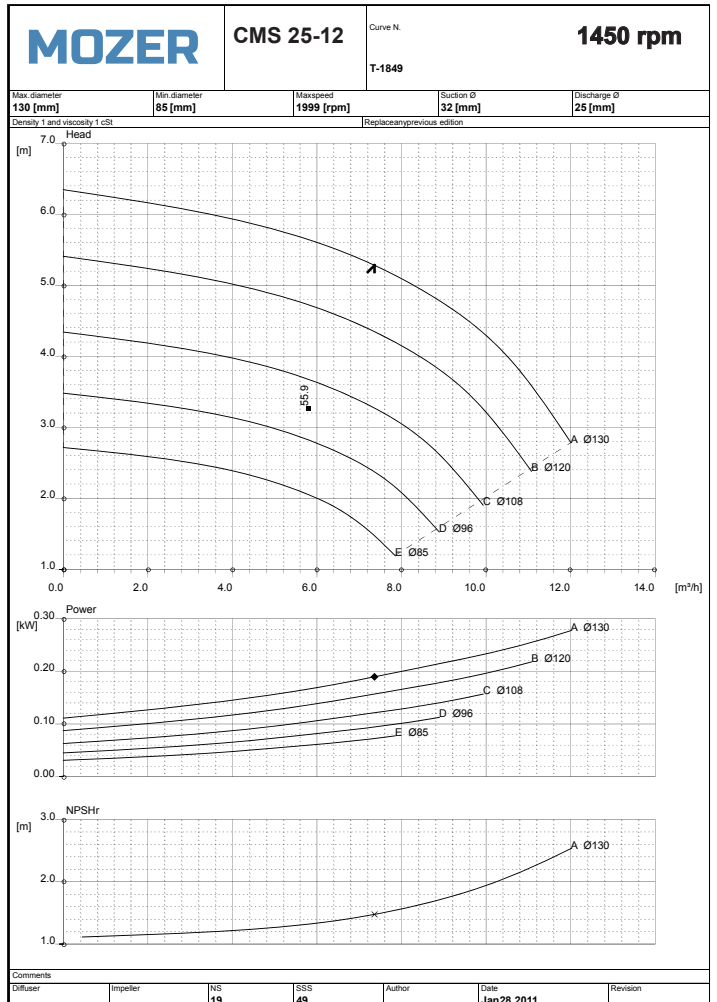
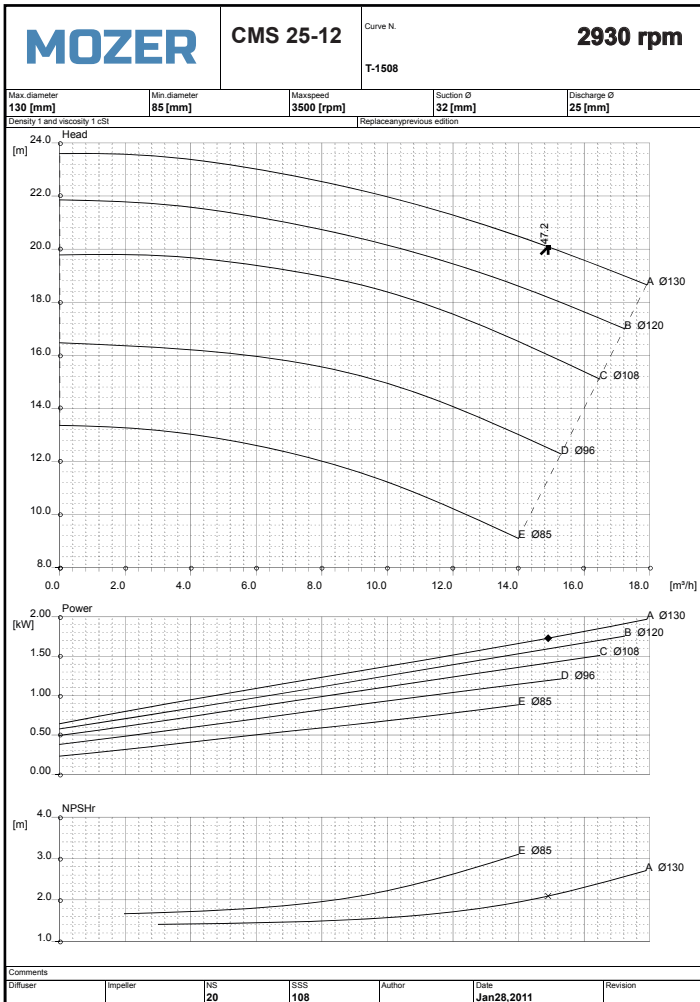
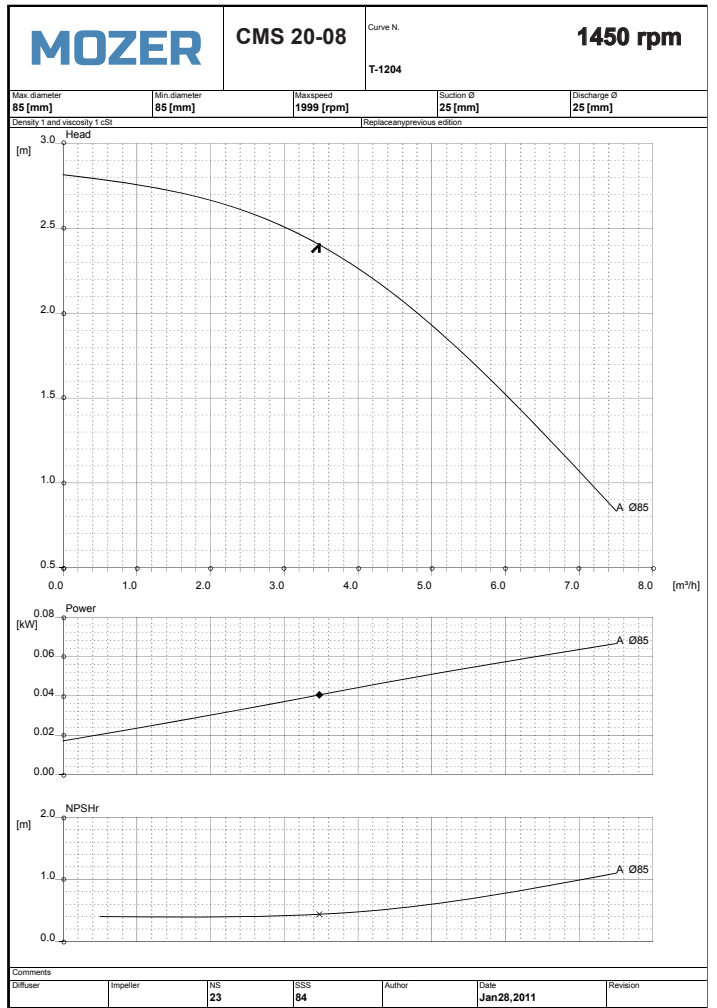
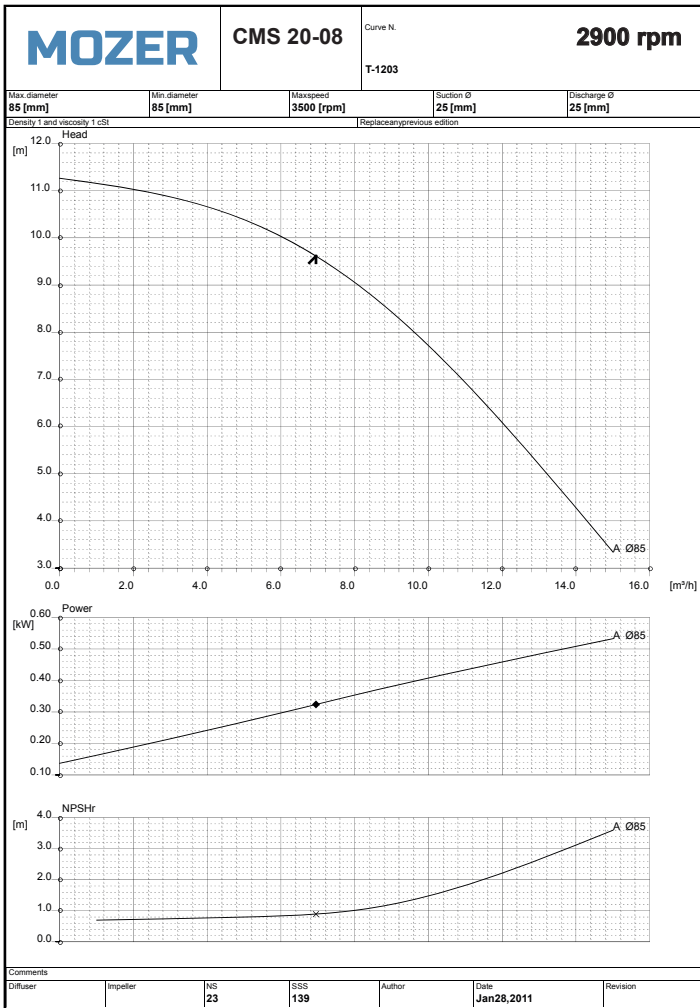
Figura picture	Pompa tipo Pump size	Grandezza motore Motor size	DIMENSIONI-DIMENSIONS [mm]																Peso weight (^b) [kg]
			DNa	DNm	a	f	h1	h2	h3	b	c	m1	m2	n1	n2	s	w		
1	20-08	71	25	25	55	90	71	115	-	35	10	116	90	142	112	11	135	4,5	
1		71	25	25	55	90	71	115	-	35	10	116	90	142	112	11	135	4,5	
1	25-12	71	32	25	55	84	71	148	102	35	10	116	90	142	112	11	129	5,5	
2		80	32	25	55	174	150	148	102	0	4	235	165	164	130	10	119	12	
2		90	32	25	55	174	150	148	102	0	4	235	165	164	130	10	119	12	
3	32-12	100	32	25	55	174	150	148	102	23	3	260	175	250	230	10	240	13	
1		71	50	32	80	95	71	150	102	35	10	116	90	142	112	11	131	7,5	
2		80	50	32	80	176	150	150	102	0	4	235	165	164	130	10	124	14	
2		90	50	32	80	176	150	150	102	0	4	235	165	164	130	10	124	14	
3	32-16	100	50	32	80	196	150	150	102	23	3	260	175	250	230	10	244	16	
3		80	50	32	85	184	155	170	-	23	3	300	220	203	183	10	174	20	
3		90	50	32	85	184	165	170	-	23	3	300	220	218	198	10	193	20	
3		100	50	32	85	204	155	170	-	25	3	280	200	240	218	12	237	22	
3		112	50	32	85	204	167	170	-	25	3	280	200	270	248	12	244	22	
3	32-20	132	50	32	85	224	162	170	-	29	4	340	220	326	304	14	269	27	
3		80	50	32	95	191	155	193	-	23	3	300	220	203	183	10	175	30	
3		90	50	32	95	191	165	193	-	23	3	300	220	218	198	10	194	30	
3		100	50	32	95	211	155	193	-	25	3	280	200	240	218	12	238	33	
3	40-12	112	50	32	95	211	167	193	-	25	3	280	200	270	248	12	245	33	
3		132	50	32	95	231	162	193	-	29	4	340	220	326	304	14	270	38	
1		70	65	40	73	95	71	150	102	35	10	116	90	142	112	11	131	8,5	
2		80	65	40	73	176	150	150	102	0	4	235	165	164	130	10	124	15	
2		90	65	40	73	176	150	150	102	0	4	235	165	164	130	10	124	15	
3	40-16	100	65	40	73	196	130	150	102	23	3	250	175	250	230	10	244	17	
3		112	65	40	73	196	142	150	102	23	3	250	175	280	260	10	238	17	
3		80	65	40	73	190	155	170	-	23	3	300	220	203	183	10	180	21	
3		90	65	40	73	190	165	170	-	23	3	300	220	218	198	10	199	21	
3	40-20	100	65	40	73	210	155	170	-	25	3	280	200	240	218	12	243	23	
3		112	65	40	73	210	167	170	-	25	3	280	200	270	248	12	250	23	
3		132	65	40	73	230	162	170	-	29	4	340	220	326	304	14	275	28	
3		90	65	40	117	191	165	195	-	23	3	300	220	218	198	10	196	31	
3	50-16	100	65	40	117	213	155	195	-	25	3	280	200	240	218	12	240	34	
3		112	65	40	117	213	167	195	-	25	3	280	200	270	248	12	247	34	
3		132	65	40	117	235	162	195	-	29	4	340	220	326	304	14	272	39	
3		80	80	50	113	195	155	190	-	23	3	300	220	203	183	10	185	24	
3		90	80	50	113	195	165	190	-	23	3	300	220	218	198	10	204	24	
3	50-20	100	80	50	113	215	155	190	-	25	3	280	200	240	218	12	248	26	
3		112	80	50	113	215	167	190	-	25	3	280	200	270	248	12	255	26	
3		132	80	50	113	225	162	190	-	29	4	340	220	326	304	14	280	31	
3		100	65	50	107	239	155	215	-	25	3	280	200	240	218	12	266	41	
3	65-16	112	65	50	107	239	167	215	-	25	3	280	200	270	248	12	273	41	
3		132	65	50	107	259	162	215	-	25	4	340	220	326	304	14	298	46	
3		160	65	50	107	289	190	215	-	25	4	340	220	364	342	14	392	53	
3	65-20	90	100	65	112	195	165	212	-	23	3	300	220	218	198	10	204	25	
3		100	100	65	112	215	155	212	-	25	3	280	220	240	218	12	248	27	
3		112	100	65	112	215	167	212	-	25	3	280	200	270	248	12	255	27	
3	65-20	100	80	65	120	248	155	240	-	25	3	280	200	240	218	12	275	39	
3		112	80	65	120	248	167	240	-	25	3	280	200	270	248	12	282	39	
3		132	80	65	120	268	162	240	-	29	4	340	220	326	304	14	307	44	

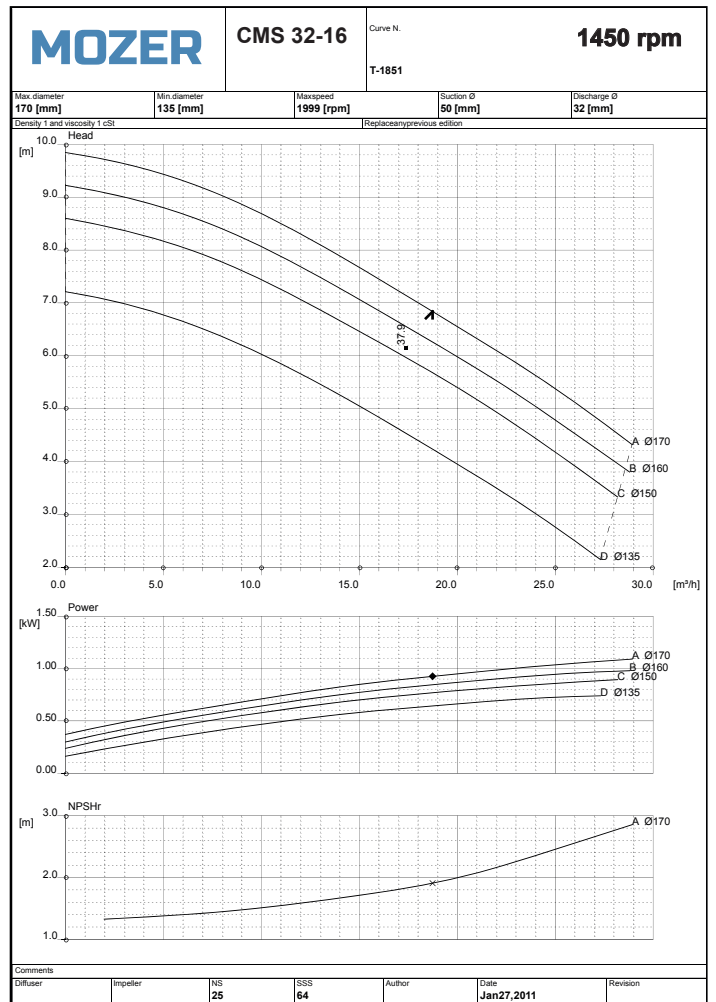
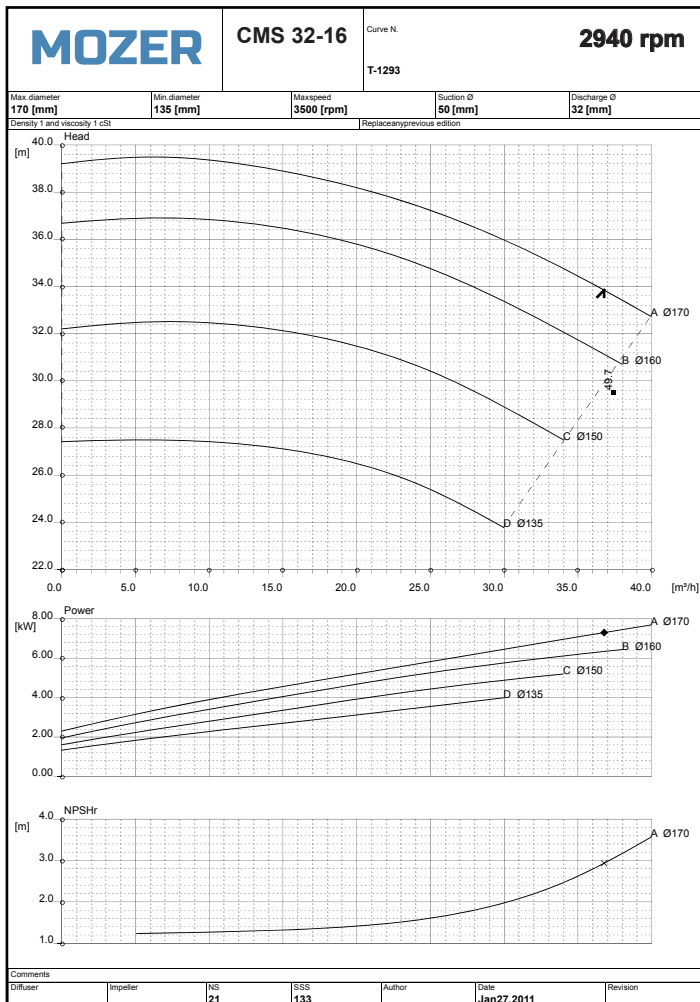
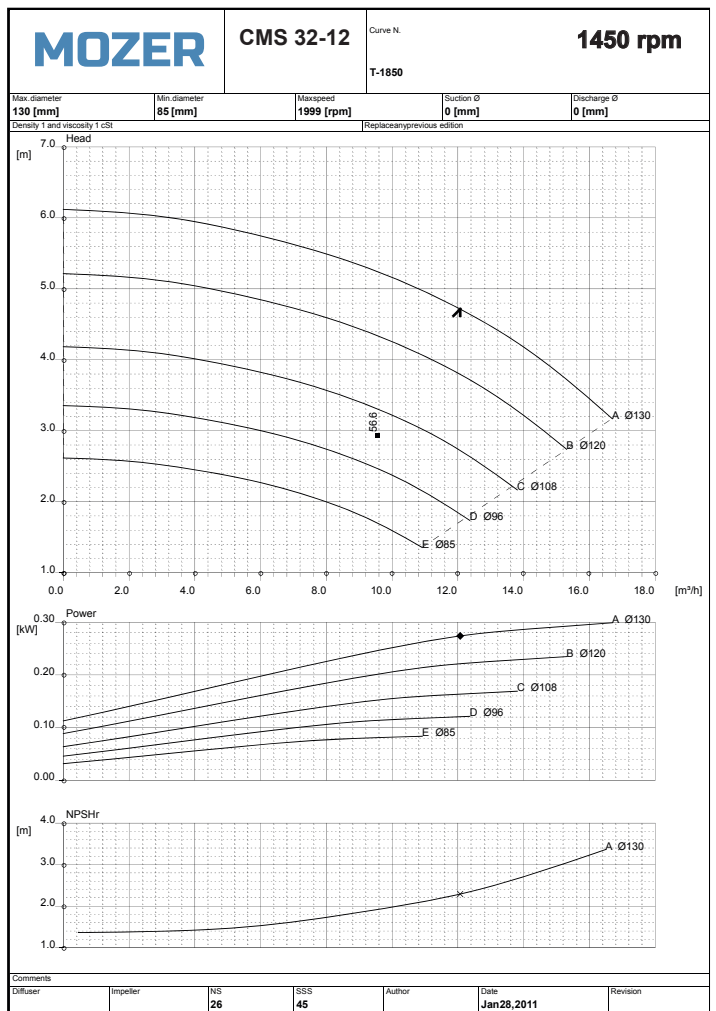
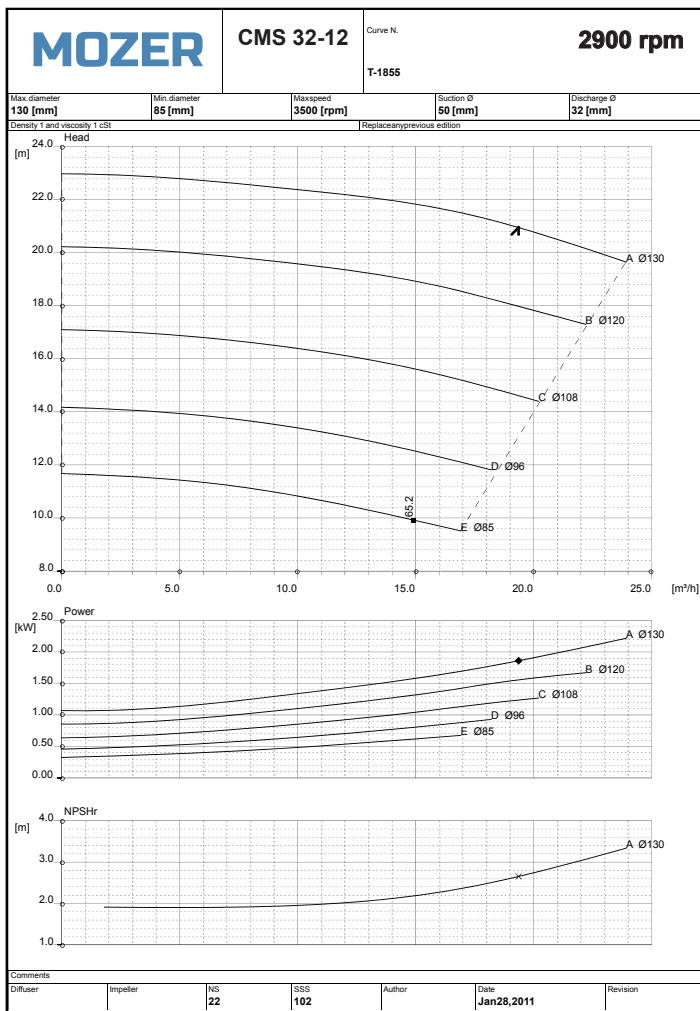
Quote e pesi suscettibili di variazione.
Dimensions and weights are subject to variations.

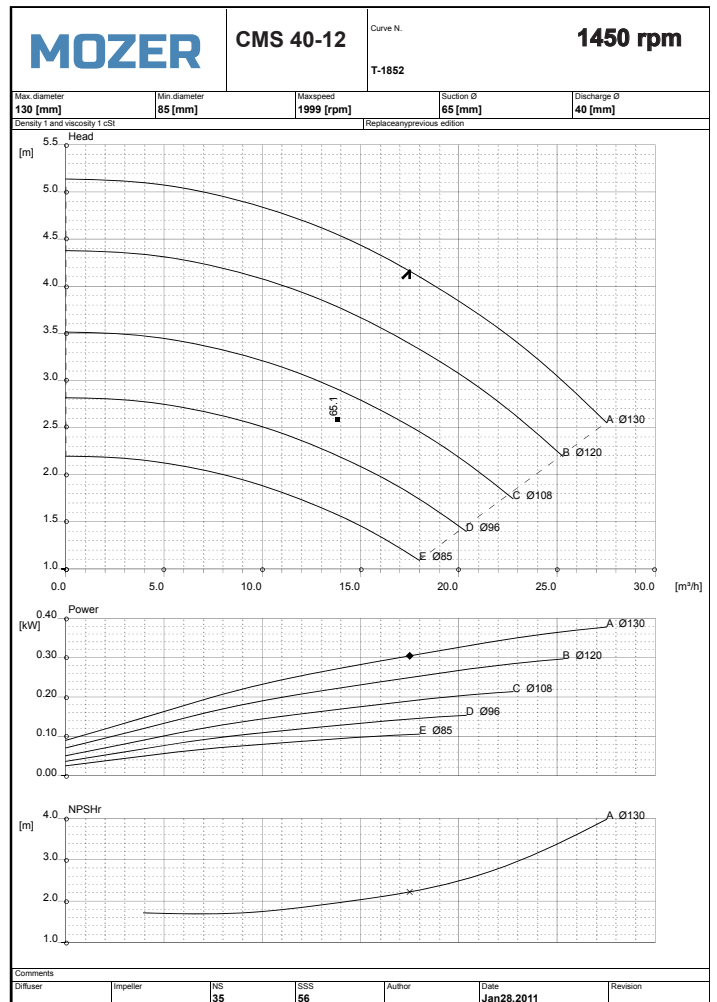
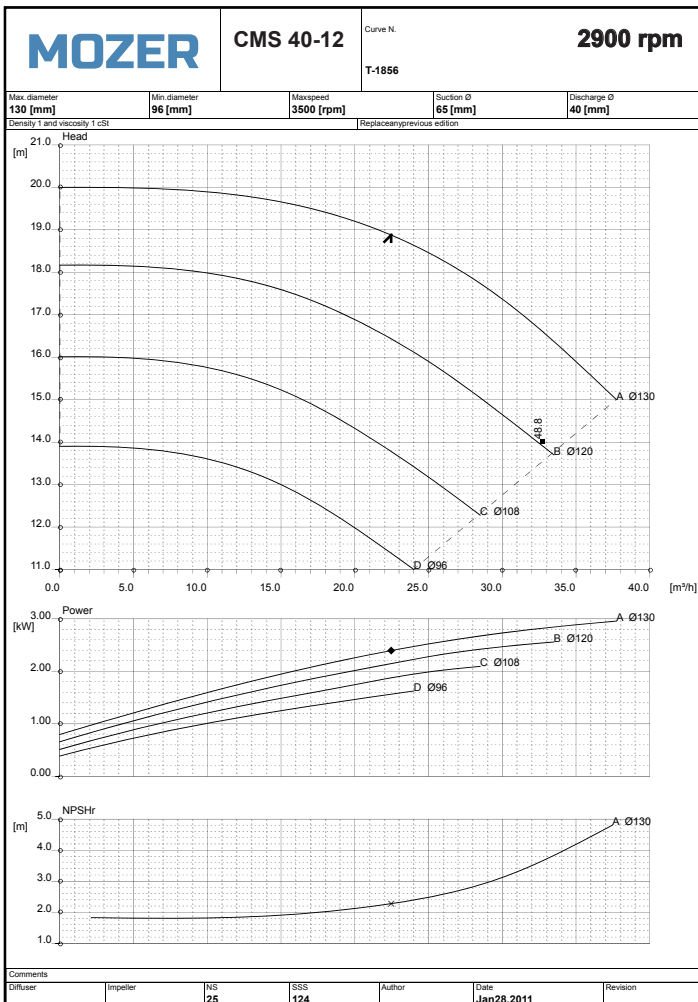
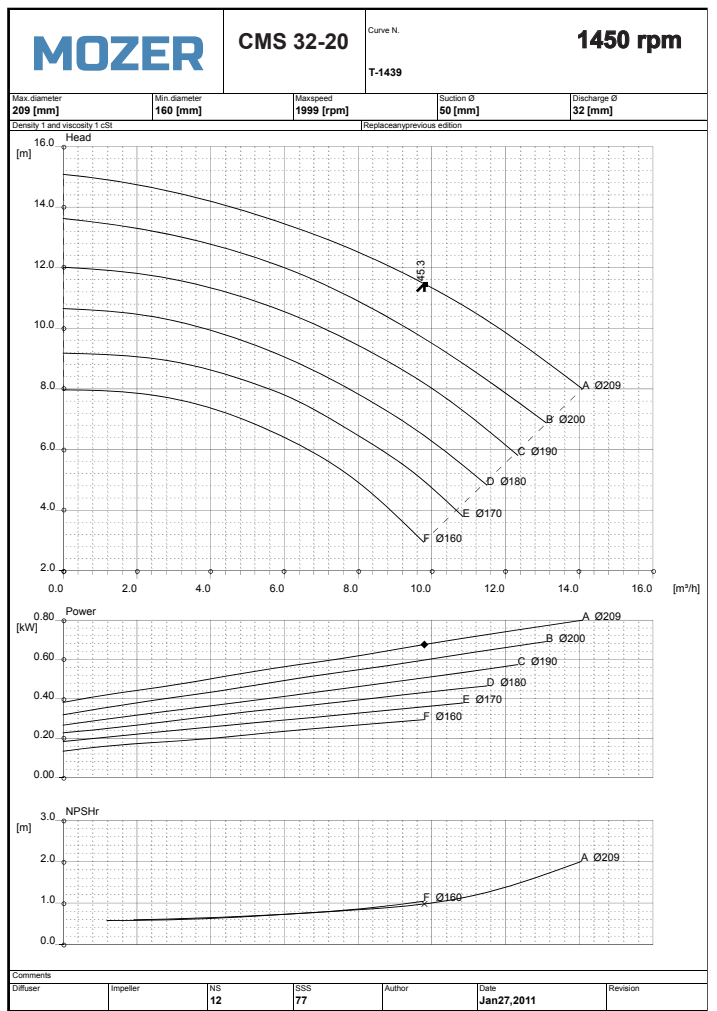
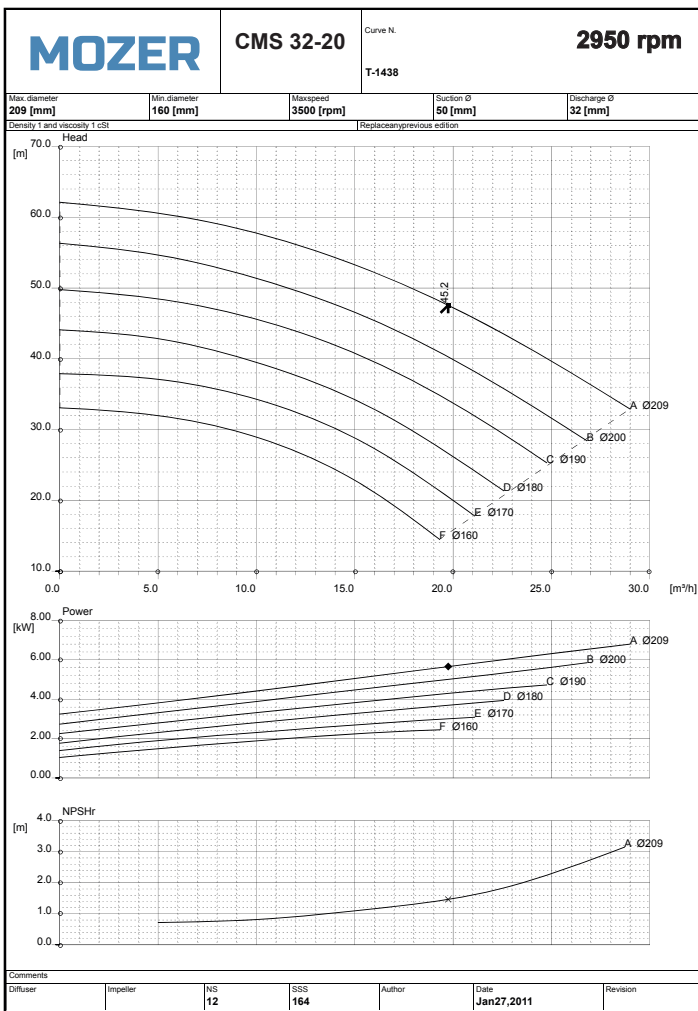
^(a)Quota indicativa può variare in funzione della marca del motore
Not binding dimension that can change according to motor brand

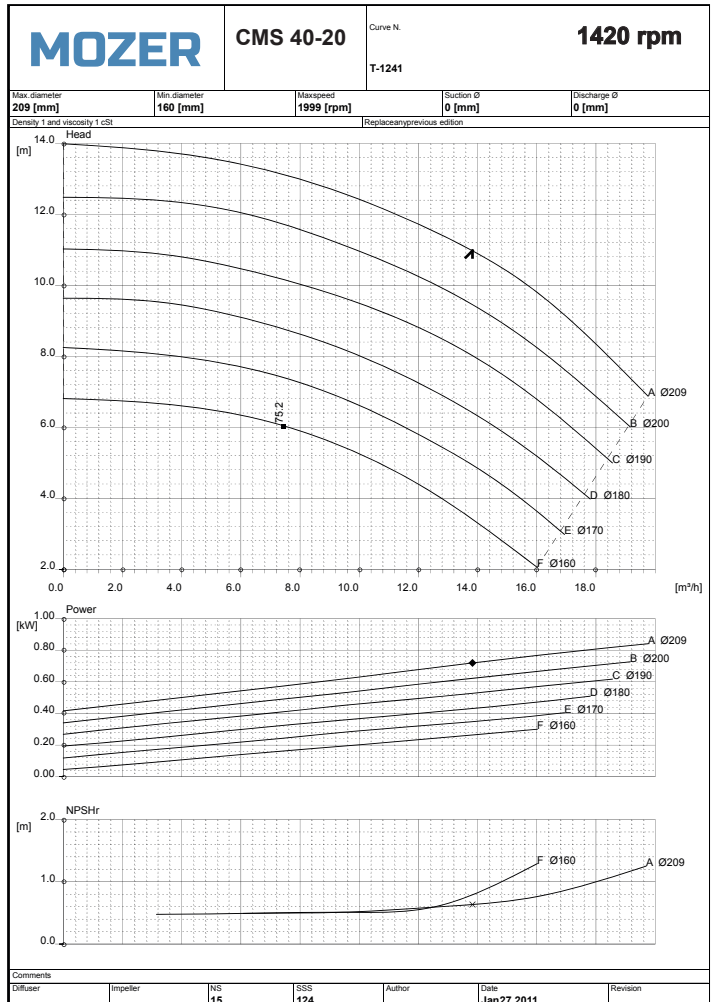
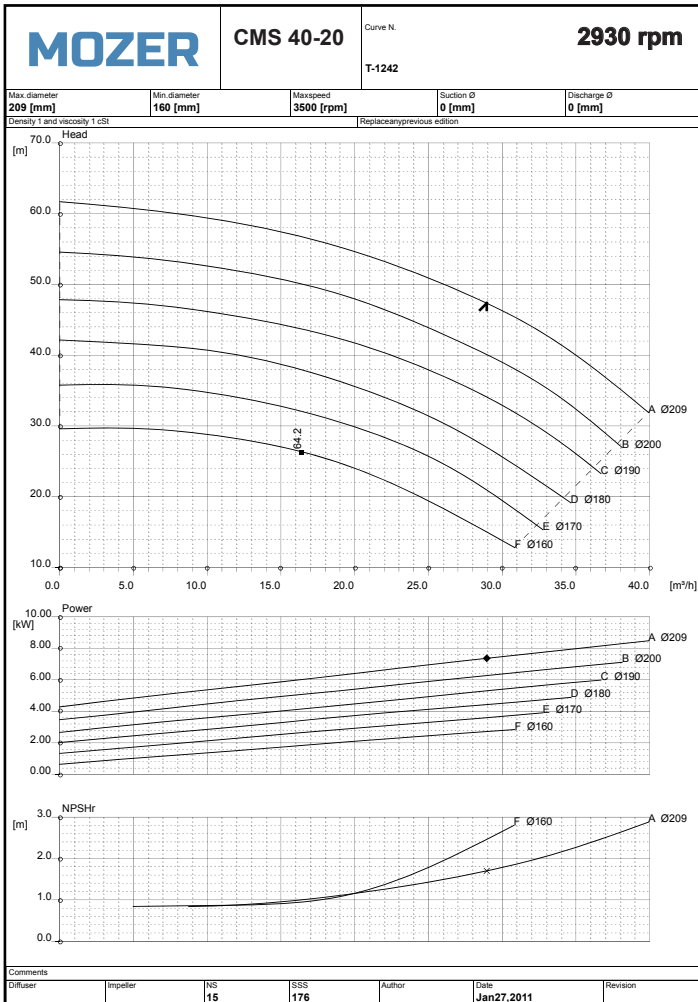
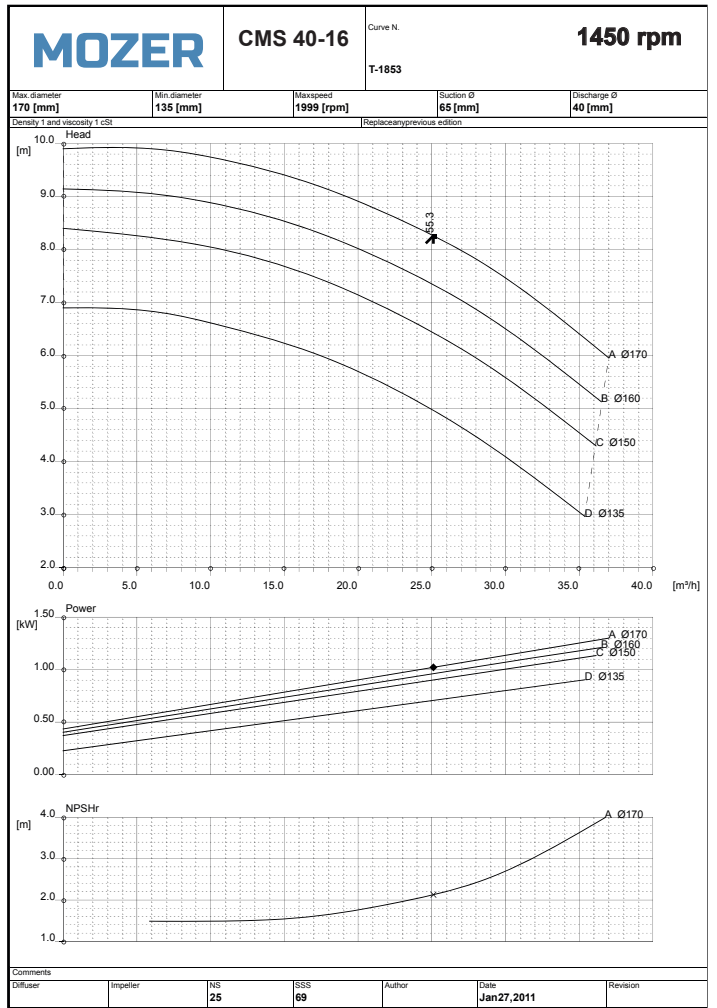
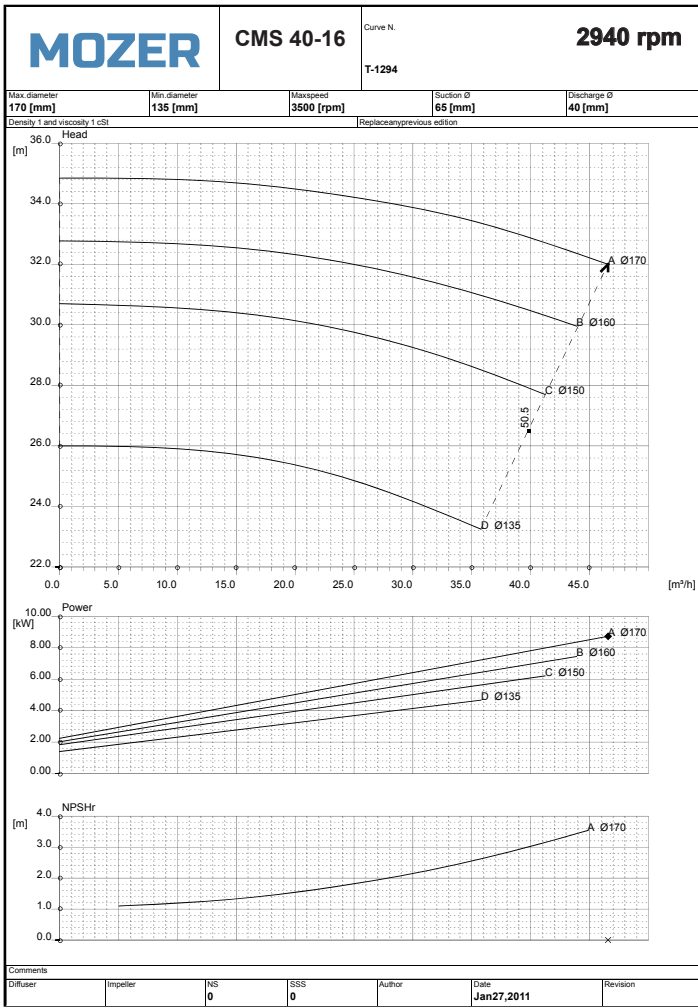
^(b)Peso senza motore elettrico

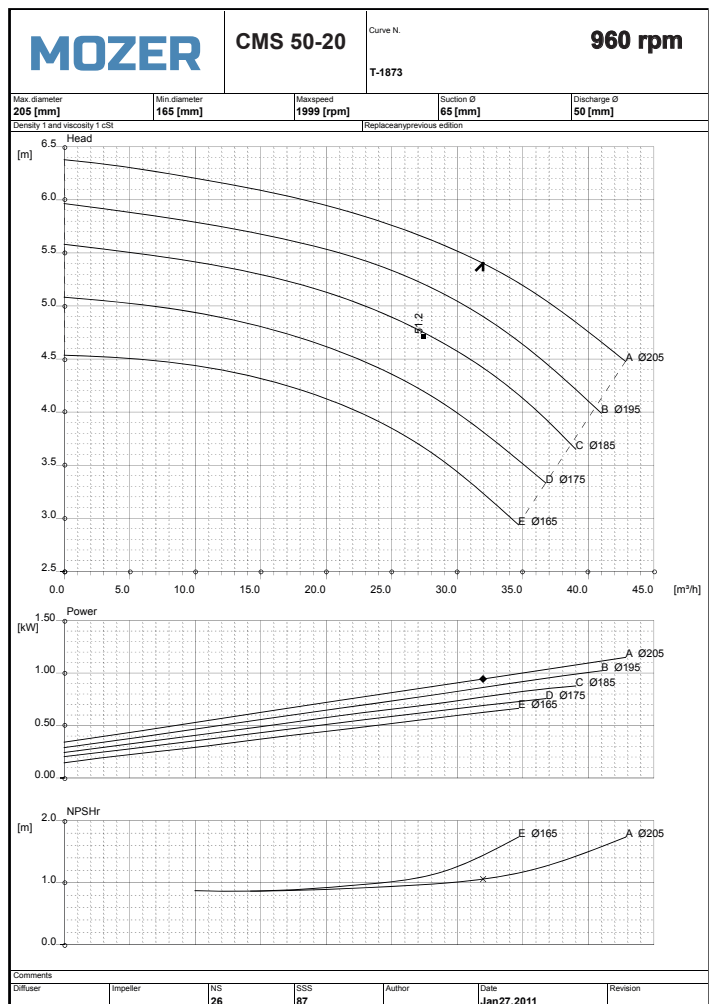
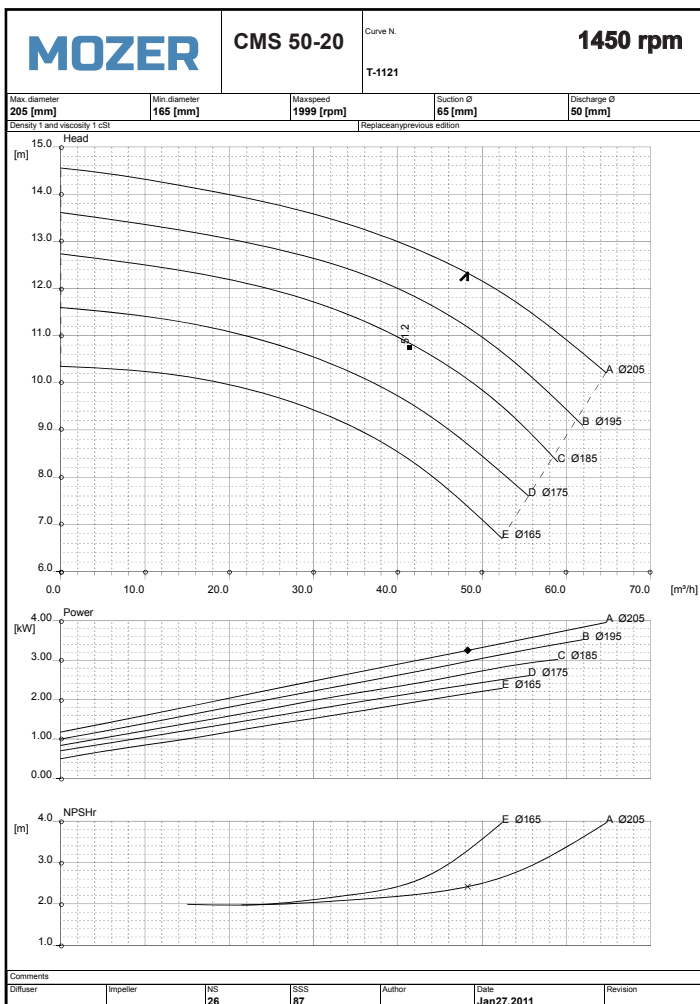
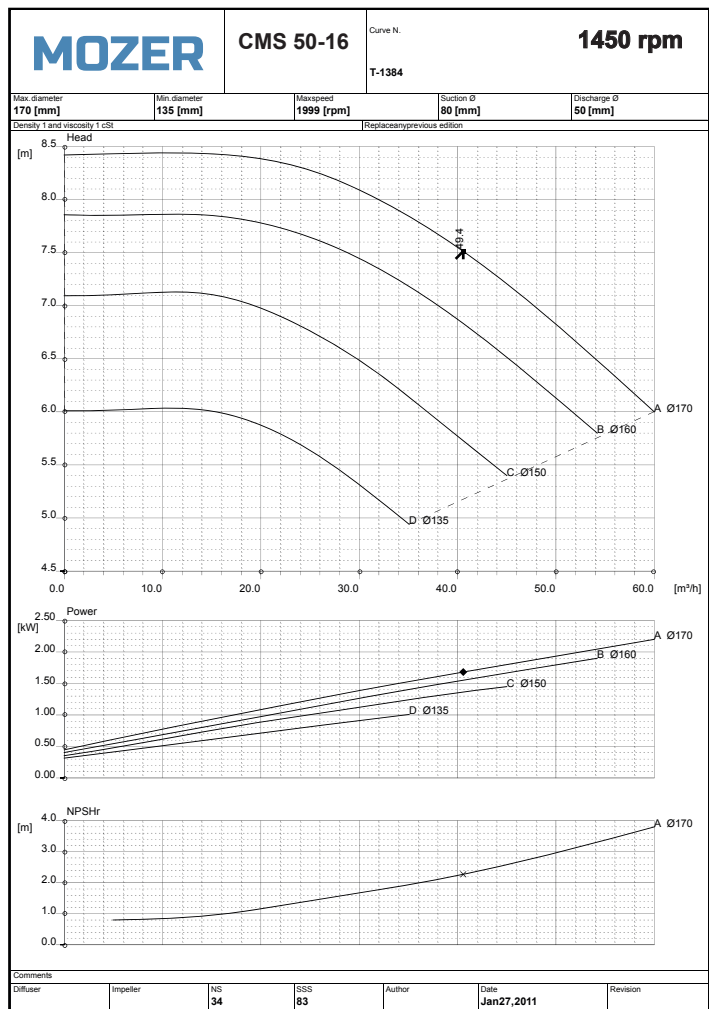
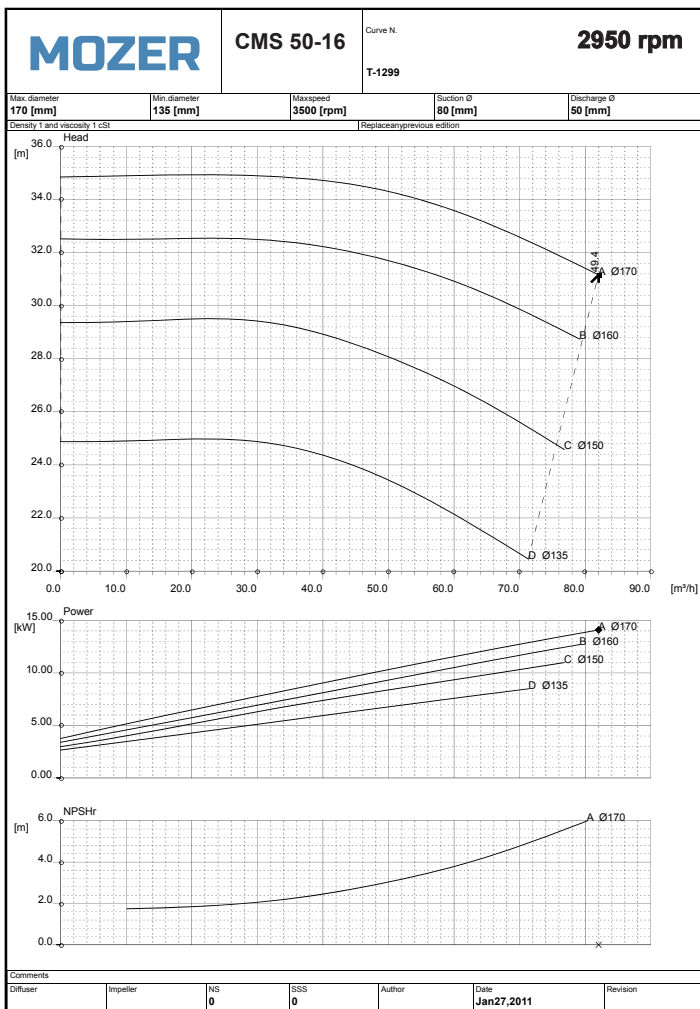


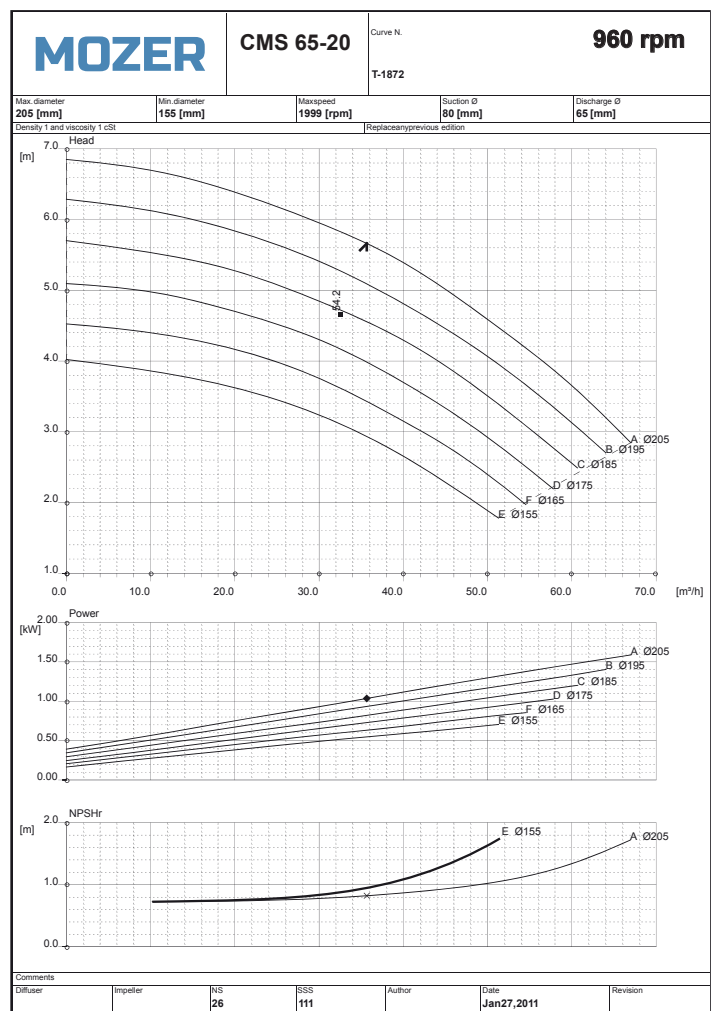
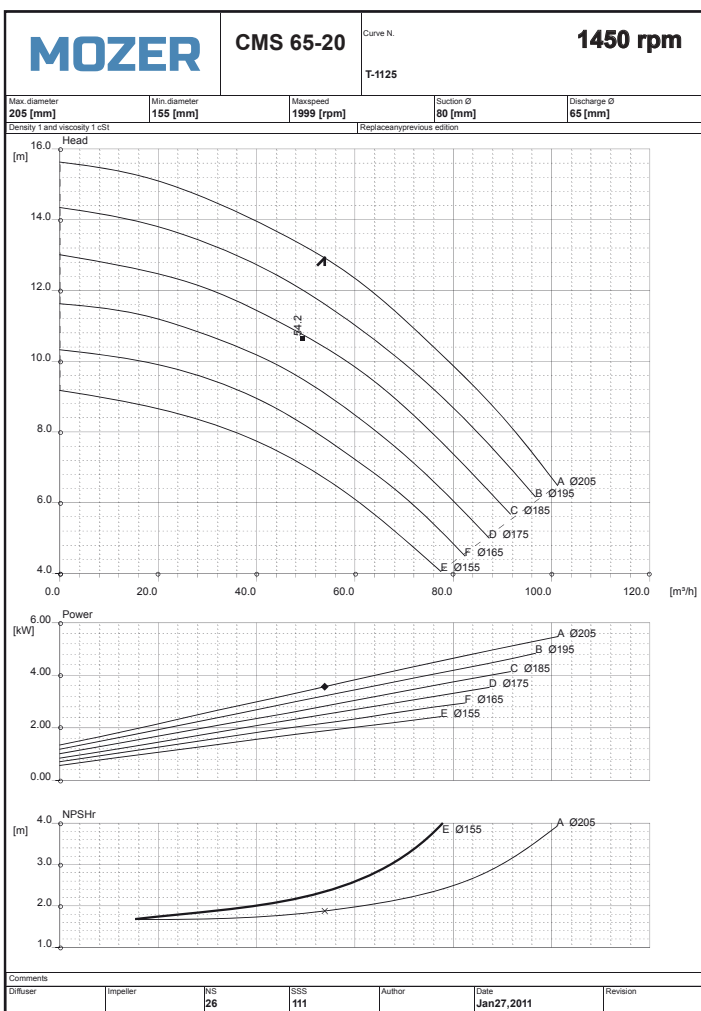
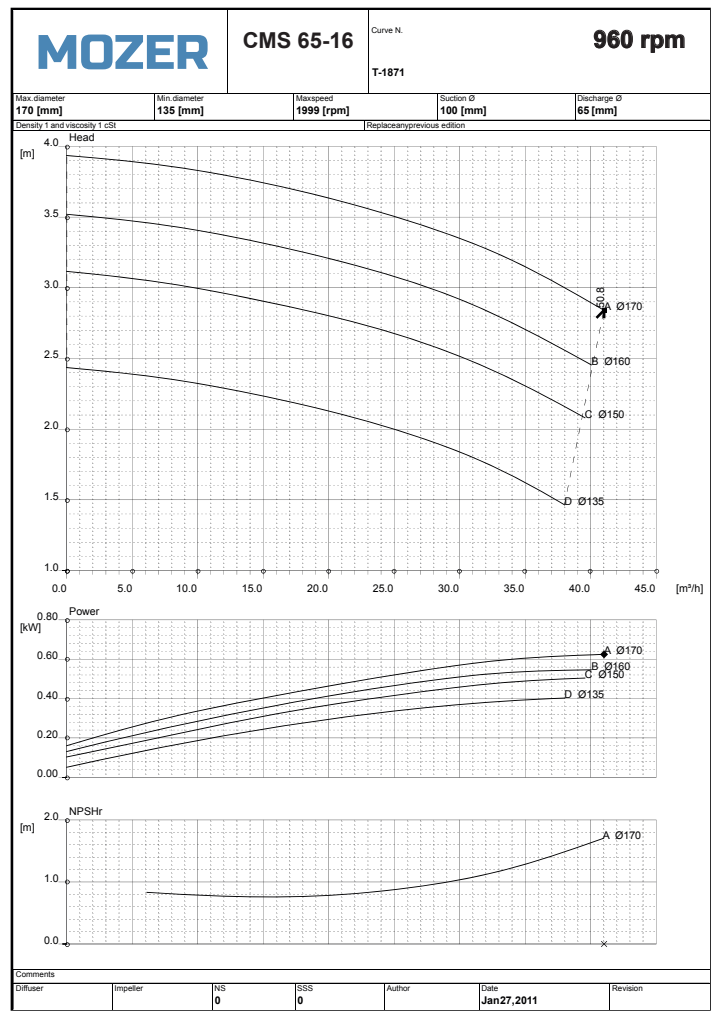
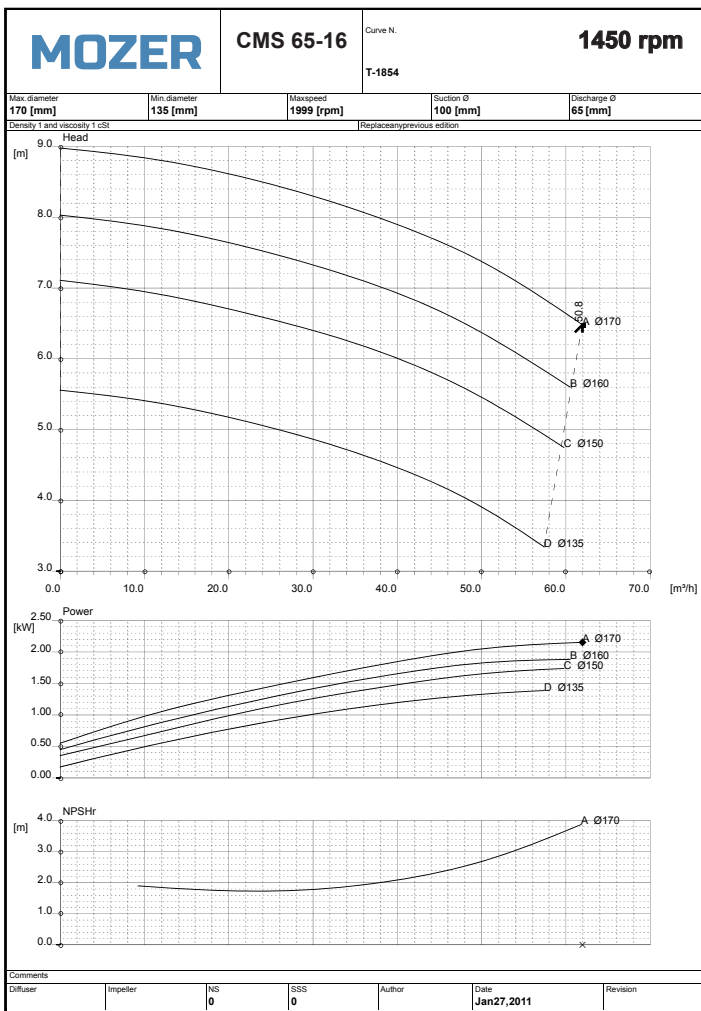












По вопросам продаж и поддержки обращайтесь:

Алматы (7273)495-231	Калининград (4012)72-03-81	Омск (3812)21-46-40	Сыктывкар (8212)25-95-17
Ангарск (3955)60-70-56	Калуга (4842)92-23-67	Орел (4862)44-53-42	Тамбов (4752)50-40-97
Архангельск (8182)63-90-72	Кемерово (3842)65-04-62	Оренбург (3532)37-68-04	Тверь (4822)63-31-35
Астрахань (8512)99-46-04	Киров (8332)68-02-04	Пенза (8412)22-31-16	Тольятти (8482)63-91-07
Барнаул (3852)73-04-60	Коломна (4966)23-41-49	Петрозаводск (8142)55-98-37	Томск (3822)98-41-53
Белгород (4722)40-23-64	Кострома (4942)77-07-48	Псков (8112)59-10-37	Тула (4872)33-79-87
Благовещенск (4162)22-76-07	Краснодар (861)203-40-90	Пермь (342)205-81-47	Тюмень (3452)66-21-18
Брянск (4832)59-03-52	Красноярск (391)204-63-61	Ростов-на-Дону (863)308-18-15	Ульяновск (8422)24-23-59
Владивосток (423)249-28-31	Курск (4712)77-13-04	Рязань (4912)46-61-64	Улан-Удэ (3012)59-97-51
Владикавказ (8672)28-90-48	Курган (3522)50-90-47	Самара (846)206-03-16	Уфа (347)229-48-12
Владимир (4922)49-43-18	Липецк (4742)52-20-81	Саранск (8342)22-96-24	Хабаровск (4212)92-98-04
Волгоград (844)278-03-48	Магнитогорск (3519)55-03-13	Санкт-Петербург (812)309-46-40	Чебоксары (8352)28-53-07
Вологда (8172)26-41-59	Москва (495)268-04-70	Саратов (845)249-38-78	Челябинск (351)202-03-61
Воронеж (473)204-51-73	Мурманск (8152)59-64-93	Севастополь (8692)22-31-93	Череповец (8202)49-02-64
Екатеринбург (343)384-55-89	Набережные Челны (8552)20-53-41	Симферополь (3652)67-13-56	Чита (3022)38-34-83
Иваново (4932)77-34-06	Нижний Новгород (831)429-08-12	Смоленск (4812)29-41-54	Якутск (4112)23-90-97
Ижевск (3412)26-03-58	Новокузнецк (3843)20-46-81	Сочи (862)225-72-31	Ярославль (4852)69-52-93
Иркутск (395)279-98-46	Ноябрьск (3496)41-32-12	Ставрополь (8652)20-65-13	
Казань (843)206-01-48	Новосибирск (383)227-86-73	Сургут (3462)77-98-35	
Россия +7(495)268-04-70	Киргизия +996(312)-96-26-47	Казахстан +7(7172)727-132	